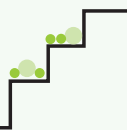


HDB SALES LAUNCH

MAY 2016



Senja



Ridges



Delightful retreat

Senja Ridges

Senja Ridges comprises one residential block with heights staggering from 8 to 24 to 33 storeys to create the tapered look of ridges. You can choose from 230 units of 4-, 5-room, and 3Gen flats in this development.

Please refer to the site plan for the facilities to be provided in this development. As this is a public housing development, facilities in this project will be opened to the public.

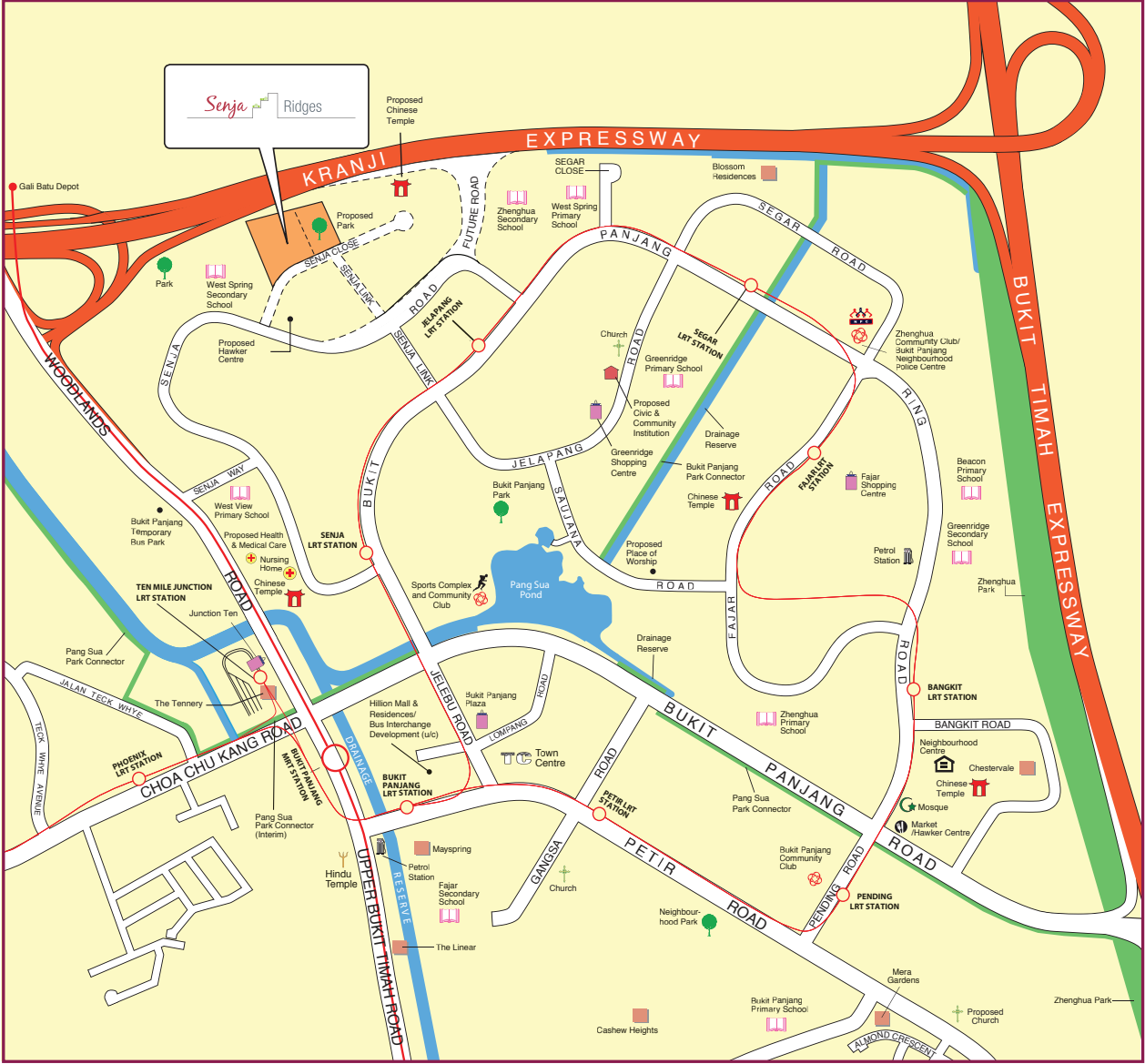


Important Notes

HDB precincts are planned to serve the evolving needs of the community. There are spaces catered for future inclusion of amenities/facilities (such as childcare centres, elderly-related facilities, education centres, residents' committee centres and day activity centres), commercial facilities (such as shops and eating houses), mechanical and electrical rooms and such other facilities depending on the prevailing needs. These spaces could be in the void decks, common property, car parks or stand-alone community buildings.

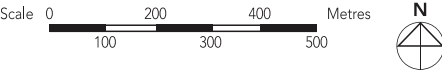
To facilitate your flat selection, we have provided information on the surrounding land use, proposed facilities and their locations in the maps and plans in this brochure. As the information provided is based on the current planning intent of the relevant government agencies, they are indicative only and are subject to review from time to time.

BUKIT PANJANG



LEGEND:

- MRT Line & Station
- (u/c) Under Construction
- LRT Line & Station
- Future Road



Notes:
All proposed developments are subject to change and planning approval.
Proposed Place of Worship includes examples like Church, Mosque, Chinese Temple, Hindu Temple, etc., subject to change and planning approval.
Proposed Civic & Community Institution includes examples like Community Centre/Club, Association, Home for the Aged, etc., subject to change and planning approval.
Proposed Health & Medical Care include examples such as Hospitals, Polyclinics, Clinics, Nursing Homes and Eldercare Facilities, etc, subject to change and planning approval.
The proposed facilities and their locations as shown are indicative only. The proposed facilities may include other ancillary uses allowed under URA's prevailing Development Control guidelines. For example, places of worship may also include columbarium as an ancillary use, while community centres may also include childcare centres. The implementation of the facilities is subject to review from time to time by the relevant authorities.

The information contained herein is subject to change at any time without notice and cannot form part of an offer or contract. While reasonable care has been taken in providing this information, HDB shall not be responsible in any way for any damage or loss suffered by any person whether directly or indirectly as a result of reliance on the said information or as a result of any error or omission therein.

Eco-Friendly Living

To encourage a 'green' lifestyle, Senja Ridges will have several eco-friendly features:

- Separate chutes for recyclable waste
- Motion sensor controlled energy efficient lighting at staircases to reduce energy consumption
- Regenerative lifts to reduce energy consumption
- Eco-pedestals in bathrooms to encourage water conservation
- Bicycle stands to encourage cycling as an environmentally friendly form of transport
- Parking spaces to facilitate car-sharing schemes
- Use of sustainable and recycled products in the development



Delightful Homes

Senja Ridges offers 4-, 5-room, and 3Gen flats. These flats will come with floor finishes in the kitchen, household shelter, service yard, and bathrooms. Wall tiles will also be provided in the bathroom and kitchen.

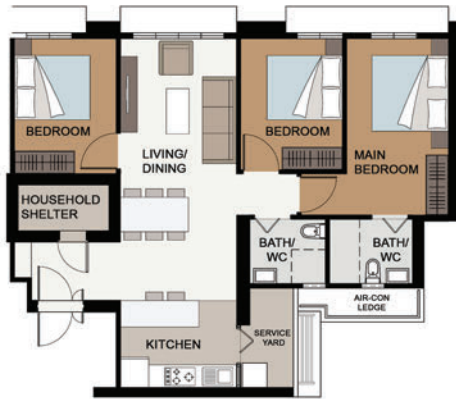
All new HDB flats have Universal Design features such as wider corridors, ramps instead of steps to allow for ageing in place.

Optional Component Scheme

The Optional Component Scheme provides convenience for our buyers, and is offered on an opt-in basis. Please refer to the attached Optional Component Scheme leaflets for details.

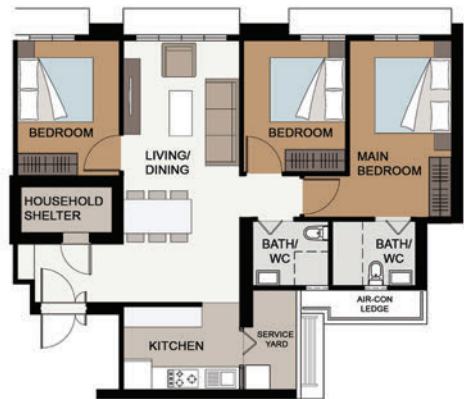
The cost of the optional components will be added to the selling price of the flat.

OPEN KITCHEN CONCEPT (DEFAULT)



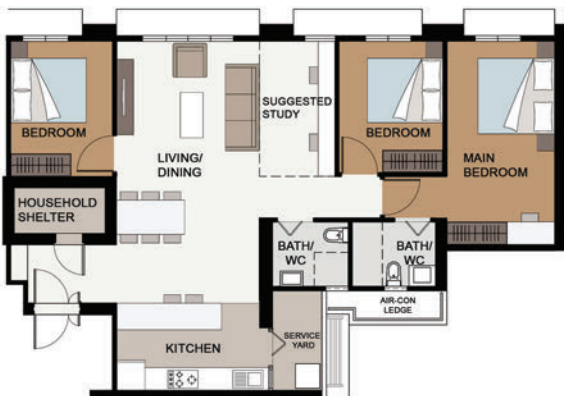
LAYOUT IDEAS FOR 4 ROOM
APPROX. FLOOR AREA 93 sqm
(Inclusive Of Internal Floor Area 90 sqm and Air-Con Ledge)

WITH KITCHEN PARTITION WALL



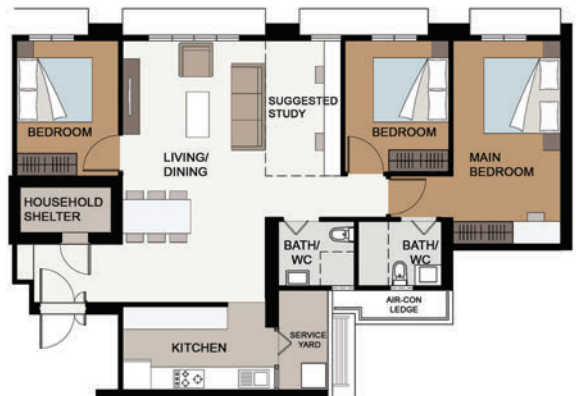
LAYOUT IDEAS FOR 4 ROOM
APPROX. FLOOR AREA 93 sqm
(Inclusive Of Internal Floor Area 90 sqm and Air-Con Ledge)

OPEN KITCHEN CONCEPT (DEFAULT)



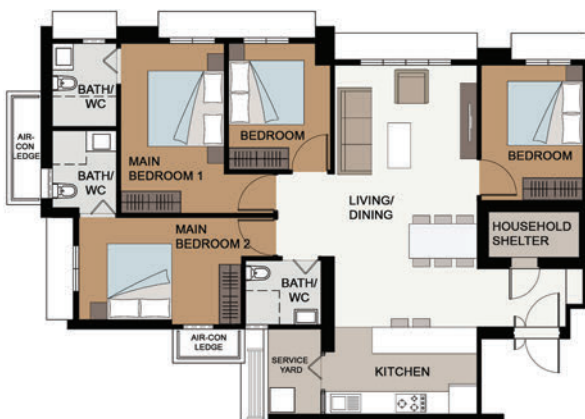
LAYOUT IDEAS FOR 5 ROOM
APPROX. FLOOR AREA 113 sqm
(Inclusive Of Internal Floor Area 110 sqm and Air-Con Ledge)

WITH KITCHEN PARTITION WALL



LAYOUT IDEAS FOR 5 ROOM
APPROX. FLOOR AREA 113 sqm
(Inclusive Of Internal Floor Area 110 sqm and Air-Con Ledge)

OPEN KITCHEN CONCEPT (DEFAULT)



LAYOUT IDEAS FOR 3GEN FLAT
APPROX. FLOOR AREA 120 sqm
(Inclusive Of Internal Floor Area 115 sqm and Air-Con Ledges)

WITH KITCHEN PARTITION WALL



LAYOUT IDEAS FOR 3GEN FLAT
APPROX. FLOOR AREA 120 sqm
(Inclusive Of Internal Floor Area 115 sqm and Air-Con Ledges)



LEGEND

| | |
|--|--|
| | 4-Room |
| | 5-Room |
| | 3Gen Flat |
| | Surrounding Buildings |
| | Future Amenities / Facilities (FA/F) at 1st storey |
| | Linkway / Linkbridge / Precinct Pavilion / Drop-off Porch / Shelter |
| | Trellis |
| | Adult Fitness Station (AFS) / Elderly Fitness Station (EFS) / Children Playground (PG) |
| | Electrical Sub-Station (ESS) |
| | Utility centre (UC) at 1st. Storey |
| | Multi-Storey Car Park |
| | Open Space |
| | Reserved For / Existing Development |
| | Staircase |
| | Drainage Reserve |
| | Driveway |
| | Corridor |
| | Centralised Refuse Chute / Chute for Recyclable Refuse |
| | Lift |
| | Service Bay |

| BLOCK NUMBER | NUMBER OF STOREYS | 4-ROOM | 5-ROOM | 3Gen Flat | TOTAL | LIFT OPEN AT |
|--------------|-------------------|--------|--------|-----------|-------|--------------|
| 638A | 8/24/33 | 106 | 62 | 62 | 230 | EVERY STOREY |
| TOTAL | | 106 | 62 | 62 | 230 | |

Senja Ridges

Applicants are encouraged to visit the place before booking a flat.

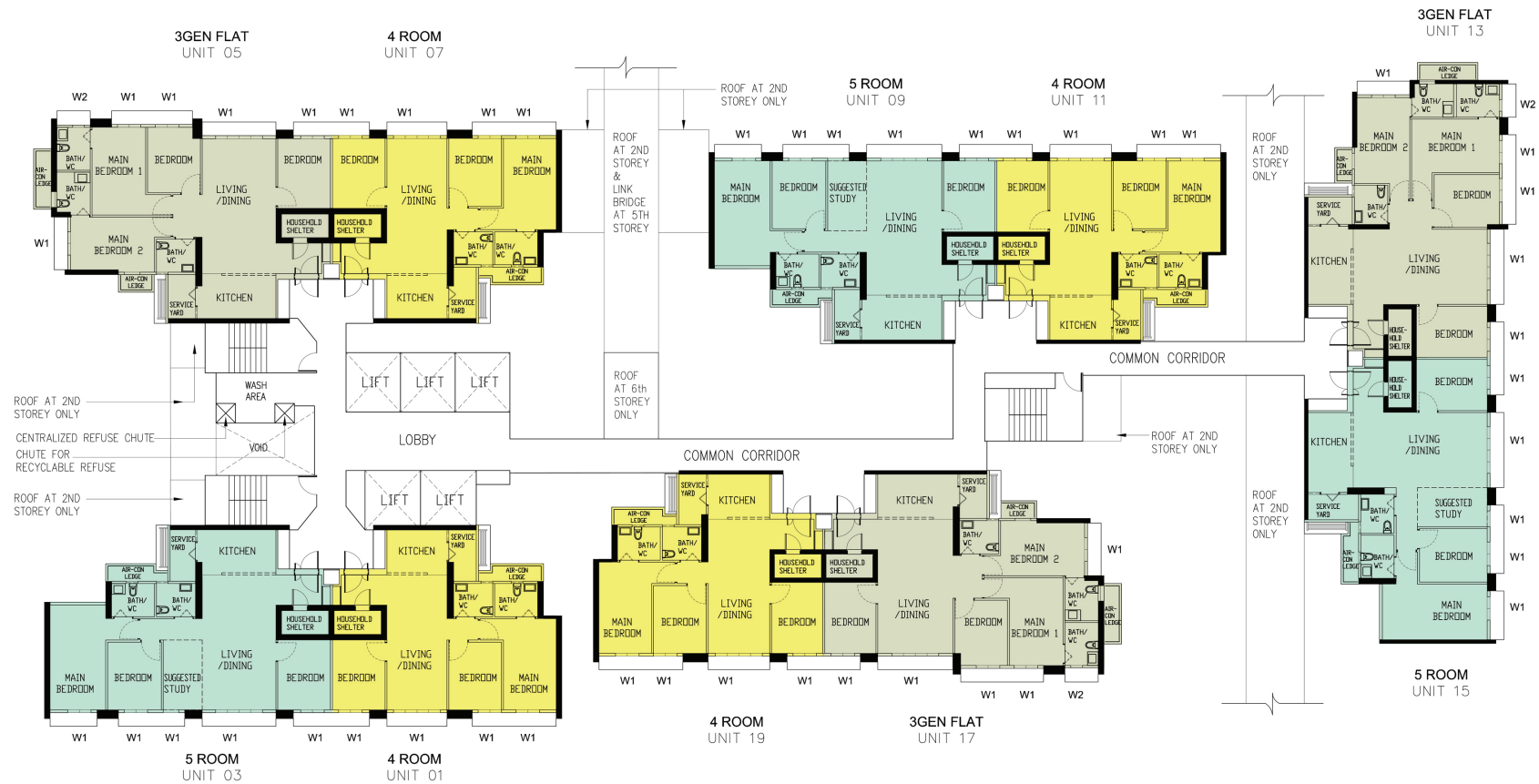


Notes:




- All proposed developments are subject to change and planning approval.
- The proposed facilities and their locations shown are indicative only. The proposed facilities may include other ancillary uses allowed under URA's prevailing Development Control guidelines. For example, places of worship may also include columbarium as an ancillary use, while community centres may also include childcare centres. The implementation of the facilities is subject to review from time to time by the relevant authorities.
- The use of the void deck in any apartment block, common property (such as precinct pavilion), car park or stand-alone community building for future amenities/facilities (such as childcare centres, elderly-related facilities, education centres, residents' committee centres and day activity centres), commercial facilities (such as shops and eating houses), mechanical and electrical rooms and such other facilities is subject to review from time to time.
- The residential blocks may be completed ahead of the proposed precinct facilities, so that flat buyers are able to collect the keys to their new homes earlier.
- Unless otherwise indicated in the sales brochure, all facilities within the project, including but not limited to roof gardens and sky terraces (if any), will be open to the public.

The information contained herein is subject to change at any time without notice and cannot form part of an offer or contract. While reasonable care has been taken in providing this information, HDB shall not be responsible in any way for any damage or loss suffered by any person whether directly or indirectly as a result of reliance on the said information or as a result of any error or omission therein.

BP N6 C15



LEGEND

-  4 ROOM
-  5 ROOM
-  3GEN FLAT

WINDOW LEGEND

W1 - THREE QUARTER HEIGHT WINDOW
(APPROX. 550MM HIGH PARAPET WALL)
W2 - TOP HUNG WINDOW AT BATH/ WC FOR 3GEN FLAT

UNLESS OTHERWISE INDICATED ALL WINDOWS WILL BE STANDARD HEIGHT WINDOWS

The coloured floor plan is not intended to demarcate the boundary of the flat.

BLOCK - 638A
(2ND TO 8TH STOREY FLOOR PLAN)




Units at and above 6th storey are higher than the main roof garden level of Block 638

SCALE





LEGEND

-  4 ROOM
 5 ROOM
 3GEN FLAT

WINDOW LEGEND

W1 - THREE QUARTER HEIGHT WINDOW
(APPROX. 550MM HIGH PARAPET WALL)
W2 - TOP HUNG WINDOW AT BATH/ WC FOR 3GEN FLAT

UNLESS OTHERWISE INDICATED ALL WINDOWS WILL BE STANDARD HEIGHT WINDOWS




BLOCK - 638A
(9TH STOREY FLOOR PLAN)
Units at and above 6th storey are higher
than the main roof garden level of Block 638

The coloured floor plan is not intended to demarcate the boundary of the flat.





LEGEND

-  4 ROOM
 5 ROOM
 3GEN FLAT

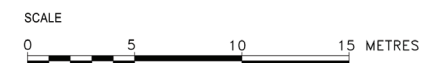
WINDOW LEGEND

W1 - THREE QUARTER HEIGHT WINDOW
(APPROX. 550MM HIGH PARAPET WALL)
W2 - TOP HUNG WINDOW AT BATH/ WC FOR 3GEN FLAT

UNLESS OTHERWISE INDICATED ALL WINDOWS WILL BE STANDARD HEIGHT WINDOWS

The coloured floor plan is not intended to demarcate the boundary of the flat.

BLOCK - 638A
(10TH STOREY FLOOR PLAN)
Units at and above 6th storey are higher
than the main roof garden level of Block 638





LEGEND

- 4 ROOM
- 5 ROOM
- 3GEN FLAT

WINDOW LEGEND

- W1 - THREE QUARTER HEIGHT WINDOW
(APPROX. 550MM HIGH PARAPET WALL)
- W2 - TOP HUNG WINDOW AT BATH/VC FOR 3GEN FLAT

UNLESS OTHERWISE INDICATED ALL WINDOWS WILL BE STANDARD HEIGHT WINDOWS

BLOCK - 638A

(11TH TO 24TH STOREY FLOOR PLAN)

Units at and above 6th storey are higher
than the main roof garden level of Block 638

SCALE



The coloured floor plan is not intended to demarcate the boundary of the flat.



LEGEND

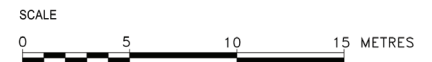
- 4 ROOM
- 5 ROOM
- 3GEN FLAT

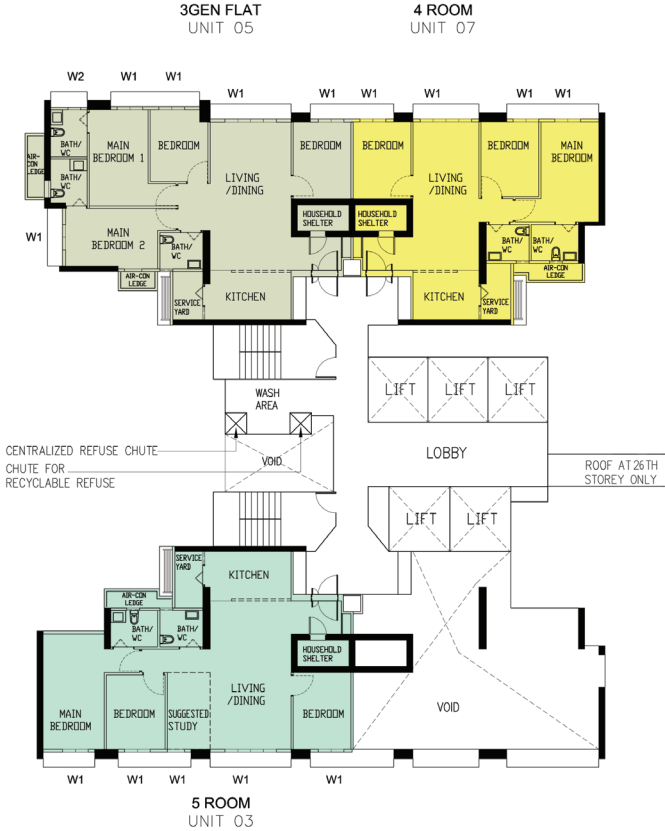
WINDOW LEGEND

- W1 - THREE QUARTER HEIGHT WINDOW (APPROX. 550MM HIGH PARAPET WALL)
- W2 - TOP HUNG WINDOW AT BATH/ WC FOR 3GEN FLAT
- UNLESS OTHERWISE INDICATED ALL WINDOWS WILL BE STANDARD HEIGHT WINDOWS

The coloured floor plan is not intended to demarcate the boundary of the flat.

BLOCK - 638A
(25TH STOREY FLOOR PLAN)
Units at and above 6th storey are higher than the main roof garden level of Block 638





LEGEND

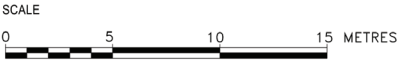
- 4 ROOM
- 5 ROOM
- 3GEN FLAT

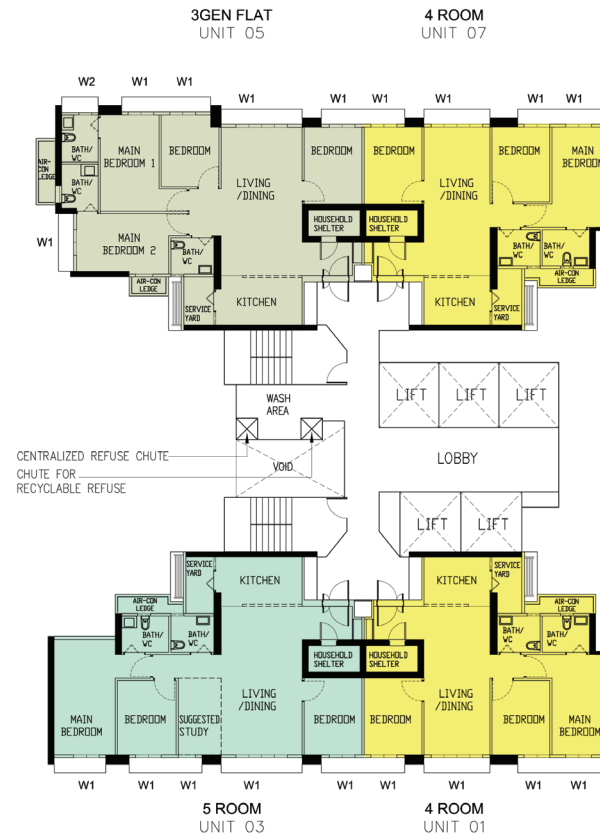
WINDOW LEGEND

W1 - THREE QUARTER HEIGHT WINDOW
(APPROX. 550MM HIGH PARAPET WALL)
W2 - TOP HUNG WINDOW AT BATH/ WC FOR 3GEN FLAT
UNLESS OTHERWISE INDICATED ALL WINDOWS WILL BE STANDARD HEIGHT WINDOWS

The coloured floor plan is not intended to demarcate the boundary of the flat.

BLOCK - 638A
(26TH STOREY FLOOR PLAN)
Units at and above 6th storey are higher
than the main roof garden level of Block 638





LEGEND

- 4 ROOM
- 5 ROOM
- 3GEN FLAT

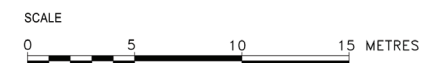
WINDOW LEGEND

- W1 - THREE QUARTER HEIGHT WINDOW
(APPROX. 550MM HIGH PARAPET WALL)
- W2 - TOP HUNG WINDOW AT BATH/ WC FOR 3GEN FLAT

UNLESS OTHERWISE INDICATED ALL WINDOWS WILL BE STANDARD HEIGHT WINDOWS

The coloured floor plan is not intended to demarcate the boundary of the flat.

BLOCK - 638A
(27TH TO 33RD STOREY FLOOR PLAN)
Units at and above 6th storey are higher
than the main roof garden level of Block 638



General Specifications For Senja Ridges

For 4-Room, 5-Room & 3Gen Flat

Foundation

Piled foundations.

Structure

Reinforced concrete structural framework with reinforced concrete slabs.

Roof

Reinforced concrete roof slab with precast concrete secondary roofing.

Walls

All external and internal walls are constructed with reinforced concrete/ precast panels/ precast lightweight concrete partitions/ lightweight concrete precision blocks with cement plastering/ drywall partition system.

Windows

Aluminium framed windows with tinted glass.

Doors

| | |
|-------------------|---|
| Entrance | : decorative solid timber door and metal gate |
| Bedroom | : laminated semi-solid timber door (Type D10a) (optional) |
| Bathroom/ WC | : laminated UPVC folding door (Type D2) (optional) |
| Household Shelter | : metal door |
| Service Yard | : aluminium framed door with glass |

Finishes

| | |
|-----------------------------|--|
| Ceilings | : skim coated or plastered and painted |
| Kitchen/ Bathroom/ WC Walls | : ceramic tiles |
| Other Walls | : skim coated or plastered and painted |
| Living/ Dining Floor | : polished porcelain tiles with laminated UPVC skirting (optional) |
| Bedroom Floor | : vinyl strip flooring with laminated UPVC skirting (optional) |
| Kitchen Floor | : glazed porcelain tiles |
| Bathroom/ WC Floor | : ceramic tiles |
| Service Yard Floor | : glazed porcelain tiles with tile skirting |
| Household Shelter Floor | : glazed porcelain tiles |

Fittings

Quality Locksets
Water Closet Suite
Clothes Drying Rack
Vanity top wash basin at attached Bathroom/ WC (for 5-Room and 3Gen flat), wash basin for other Bathroom/ WC (optional)
Bath/ Shower mixer with shower set, tap mixer (optional)

Services

Gas services and concealed water supply pipes
Exposed sanitary stacks (which can be located at Service Yard and/ or Air-con ledge)
Concealed electrical wiring to lighting and power points (including water heater and air-conditioning points)
Television points
Data points

Important Notes

- 1) The Household Shelter is designed for use as civil defence shelter. The walls, ceiling, floor and door of the Household Shelter shall not be hacked, drilled, altered or removed.
- 2) Air-con panel in the main bedroom will not be provided.
- 3) Laminated UPVC door frame shall be provided to all Bathroom/ WC door openings.
- 4) Any unused or unoccupied open spaces in front of or nearby/ adjacent to the flat units are not available for purchase and the HDB will not entertain any request from the flat owners to purchase and/ or enclose the unused or unoccupied open spaces.
- 5) The details of services in a flat, e.g. gas pipes, water pipes, sanitary stacks, electrical wiring, television points, data points, etc. are not indicated on the plans.
- 6) When selecting the flat, buyers may opt for items listed above as optional under the Optional Component Scheme. The cost of the optional items opted for will be added to the purchase price of the flat.

You are advised to visit HDB's website at www.hdb.gov.sg for information on renovation rules.

Disclaimer

- 1) HDB owns the copyright in all information, maps, and plans of this brochure.
- 2) The content provided in this brochure is not intended to form part of any offer or contract for the sale of flats. They are provided for your general information only, and are not statements or representations of fact.
- 3) Visual representations, such as pictures, art renderings, depictions, illustrations, photographs, drawings, as well as other graphic representations and references, are only artistic impressions. They are provided for your general information only, and are not representations of fact.
- 4) The information on this project, including but not limited to the dimensions, areas, plans, colour schemes, descriptions, and specifications, are subject to change or review without notice at our sole discretion or if required by the relevant authorities.
- 5) We may at any time, without any notice and at our sole discretion, change any aspect of this project, including but not limited to the omission, amalgamation, increase, or reduction of amenities and facilities, colour schemes, design features, and specifications.
- 6) We will not entertain any request for alteration of the layout or specifications of a flat to suit individual needs.
- 7) While reasonable care has been taken in providing the information in this brochure, we do not warrant its accuracy. We shall not be responsible in any way for any damage or loss suffered by any person whether directly or indirectly as a result of reliance on the said information or as a result of any error or omission therein.
- 8) The floor areas shown are scaled strata areas and subject to final survey.
- 9) The surrounding land use, proposed facilities and their locations as shown in the maps and plans are indicative only and subject to change. They may include ancillary uses allowed under the Urban Redevelopment Authority's prevailing Development Control guidelines.
- 10) We reserve the right to use or allow the use of
 - the void deck in any Apartment block,
 - Car park;
 - Common property (such as precinct pavilion); or
 - Standalone community building,for:
 - Future amenities/ facilities (such as child care centres, elderly-related facilities, education centres, residents' committee centres, and day activity centres);
 - Commercial facilities (such as shops and eating houses);
 - Mechanical and electrical rooms; and
 - Such other facilities as we deem fit.
- 11) This brochure does not and is not intended to provide full and complete information of the guidelines or requirements of the relevant authorities. You are advised to approach the relevant authorities directly for full information and details of these guidelines and requirements.



Copyright © Housing & Development
Board All rights reserved. July 2016

OPTIONAL COMPONENT SCHEME (3-, 4-, 5-ROOM AND 3GEN FLATS)

The Optional Component Scheme (OCS) provides convenience for flat buyers, and is offered on an opt-in basis. Choose the OCS items you want before your flat selection appointment. The cost of the OCS items will be added to the selling price of the selected flat.

The 3-, 4-, 5-room and 3Gen flats come with:

- floor finishes in the kitchen, household shelter, service yard and bathrooms
- wall tiles in the bathrooms and kitchen
- water closet suite in each bathroom

YOU CAN CHOOSE TO HAVE THE FOLLOWING ITEMS INSTALLED IN YOUR SELECTED FLAT:

- Floor finishes for living/ dining room and bedrooms
- Internal doors + sanitary fittings
 - wash basin with tap mixer/ vanity top^ with tap mixer
 - shower set with bath/ shower mixer

^ For attached bathroom of 5-room and 3Gen Flats.



Vanity top wash basin with tap mixer in attached bathroom (applicable for 5-room and 3Gen flats)



Wash basin with tap mixer



Handheld shower set with bath/ shower mixer

KITCHEN PARTITION WALL (where feasible)

To provide buyers greater flexibility in terms of layout and design, some flats will come with an open kitchen concept. You can opt-in to have a partition wall between the living/ dining area and kitchen, if you do not want an open kitchen concept.

Disclaimer: All displays and images shown here are strictly for reference only and are subject to change without notice. The displays and images shown here are conceptual and indicative only and the colour schemes, design, dimensions, type, tonal differences and specifications may differ from the actual fittings installed in the flat.

April 2016