

**LEGEND:**

MRT Line & Station    
 Future Road    
 (u/c) Under Construction

Scale 0 200 400 Metres  
100 300 500

**Notes:**

All proposed developments are subject to change and planning approval.  
 Proposed Civic & Community Institution includes examples like Community Centre/Club, Association, Home for the Aged, etc., subject to change and planning approval.  
 Proposed Health & Medical Care (eg. Nursing Home), subject to change and planning approval.

The information contained herein is subject to change at any time without notice and cannot form part of an offer or contract. The proposed facilities and their locations as shown are only estimates. The proposed facilities may include other ancillary uses allowed under URA's prevailing Development Control guidelines. For example, places of worship may also include columbarium as an ancillary use, while community centres may also include childcare centres. The implementation of the facilities is subject to review by the Government or competent authorities. While reasonable care has been taken in providing this information, HDB shall not be responsible in any way for any damage or loss suffered by any person whether directly or indirectly as a result of reliance on the said information or as a result of any error or omission therein.





# LEGEND

- 3-Room
- 4-Room
- 5-Room
- Surrounding Buildings
- Trellis
- Precinct Pavilion at 1st Storey / Drop-off Porch / Linkway / Shelter / Link-bridge
- Children Playground (PG) / Adult Fitness Station (AFS) / Elderly Fitness Station (EFS)
- Electrical Sub-Station (ESS) at 1st Storey
- Residents' Committee Centre (RCC) / Future Social Community Facilities (FSCF) at 1st Storey
- Multi-Storey Carpark
- Open Space
- Staircase
- Driveway
- Reserved for / Existing Development
- Air-well
- Utility Centre (UC) at 1st Storey
- Eating House (EH) / Shop (S) / Minimart (MM) at 1st Storey
- Centralized Refuse Chute
- Lift
- Service Bay

Block Number	Number of Storeys	*3 Room	4 Room	5 Room	TOTAL	Lift open at
431A	13	-	36	36	72	Every Storey
431B	13	36	48	-	84	Every Storey
431C	13	60	48	-	108	Every Storey
431D	13	-	84	-	84	Every Storey
432A	13	-	36	60	96	Every Storey
432B	13	-	24	60	84	Every Storey
432C	13	-	24	72	96	Every Storey
432D	13	-	24	48	72	Every Storey
<b>TOTAL</b>		<b>96</b>	<b>324</b>	<b>276</b>	<b>696</b>	

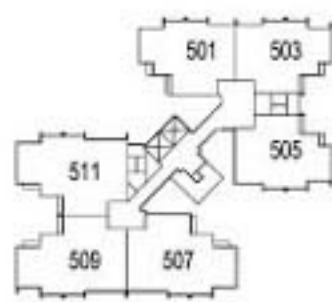
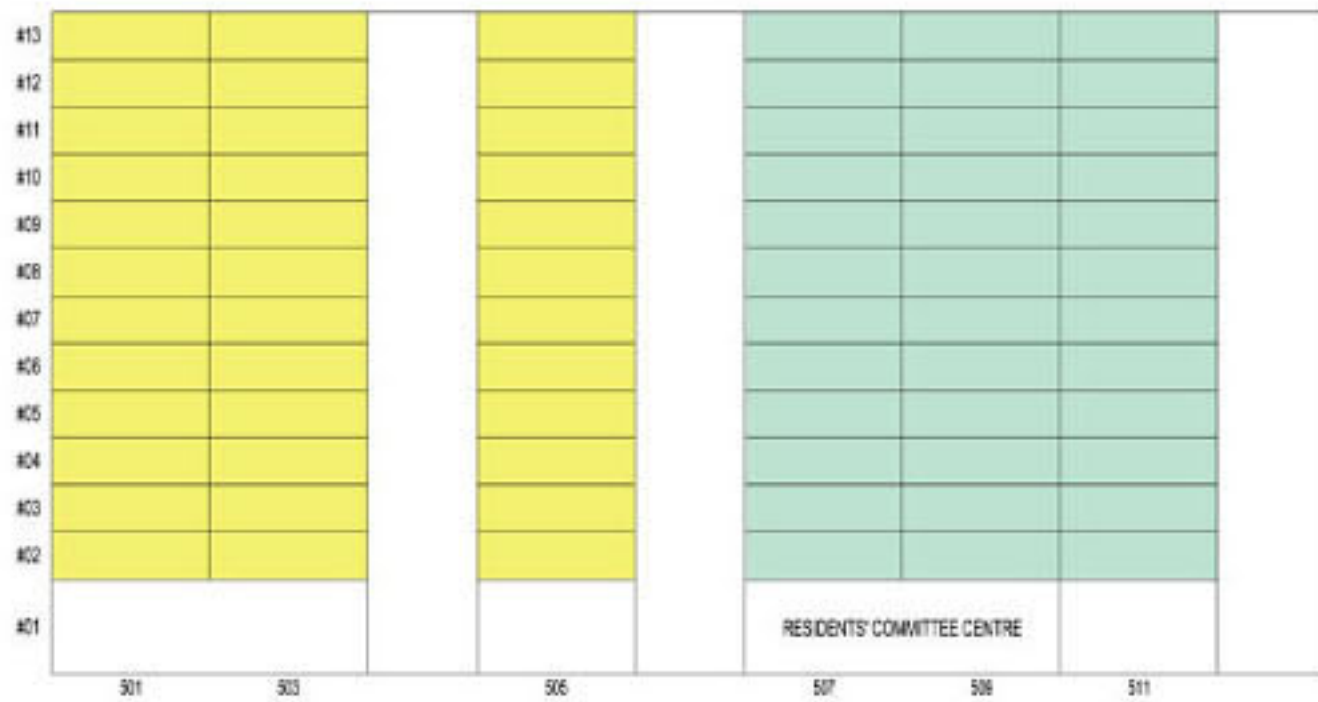
\*96 units of 3-room flats in Vista Spring @ Yishun are reserved for future sale.

The information contained herein is subject to change at any time without notice and cannot form part of an offer or contract. The proposed facilities and their locations as shown are only estimates. The proposed facilities may include other ancillary uses allowed under URA's prevailing Development Control guidelines. For example, places of worship may also include columbarium as an ancillary use, while community centres may also include childcare centres. The implementation of the facilities is subject to review by the Government or competent authorities. While reasonable care has been taken in providing this information, HDB shall not be responsible in any way for any damage or loss suffered by any person whether directly or indirectly as a result of reliance on the said information or as a result of any error or omission therein.

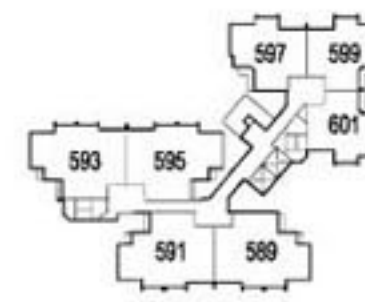




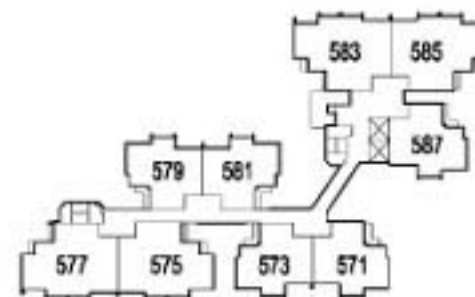
# Unit Distributions



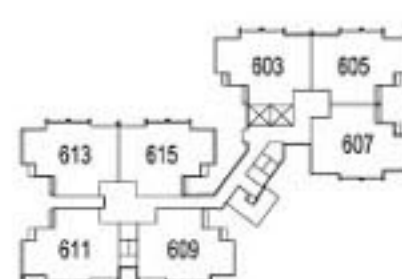
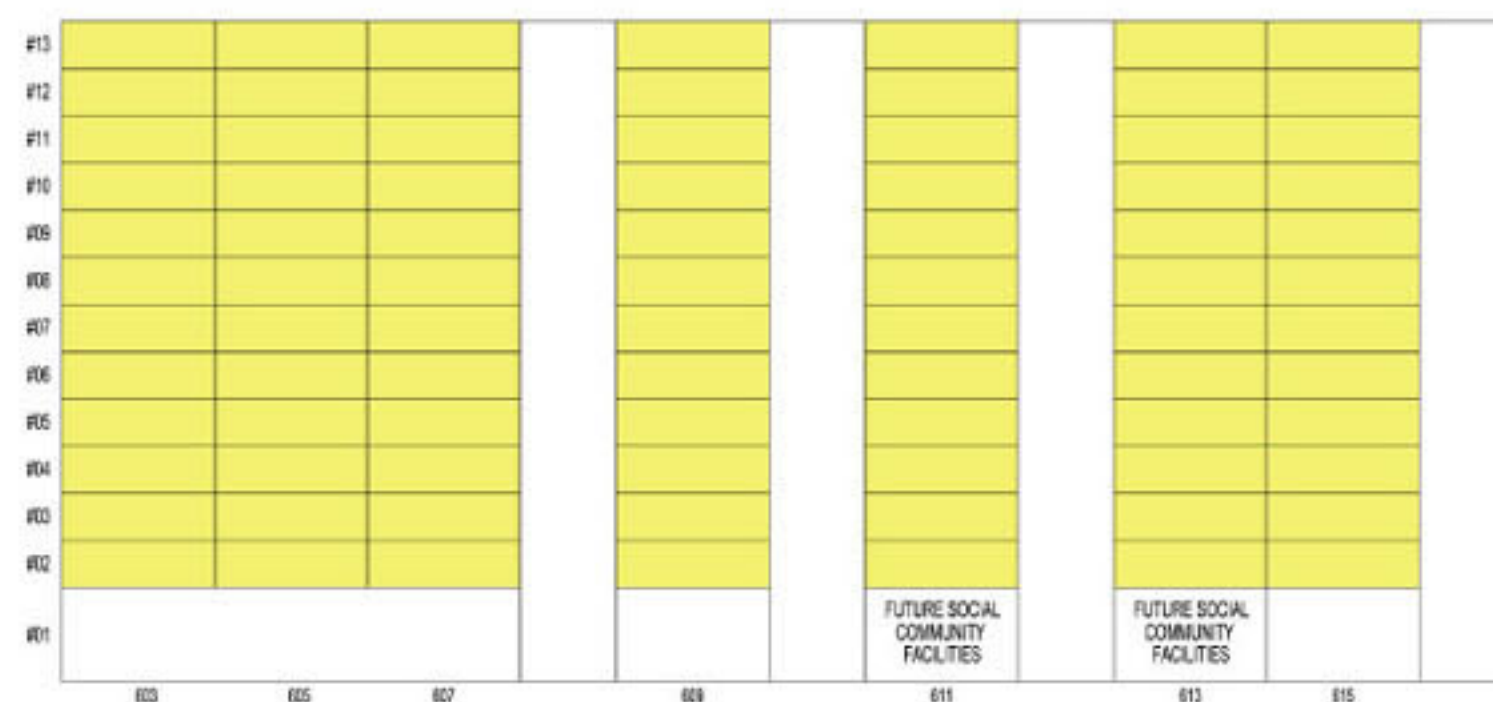
**BLOCK 431A**  
 3 ROOM  
 4 ROOM



**BLOCK 431B**  
 4 ROOM  
 3 ROOM

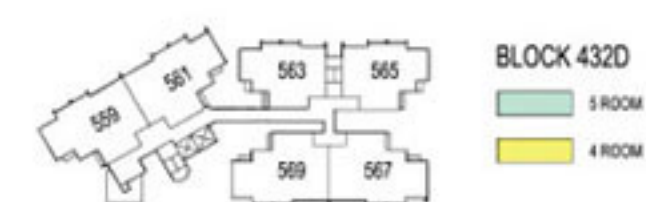
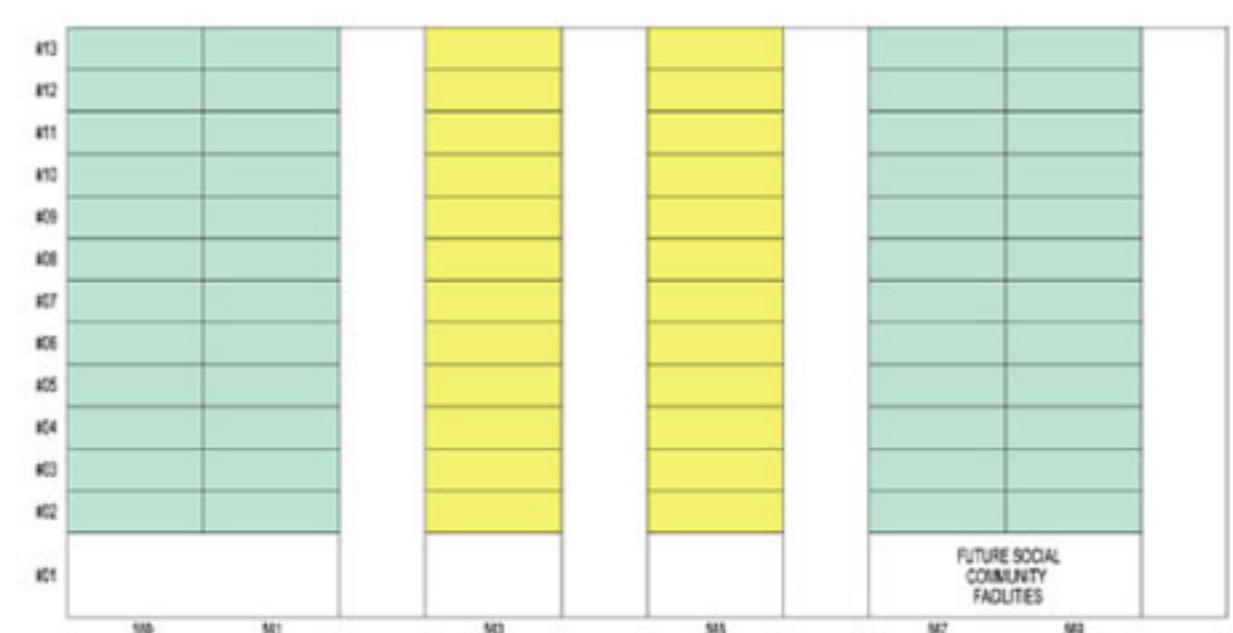
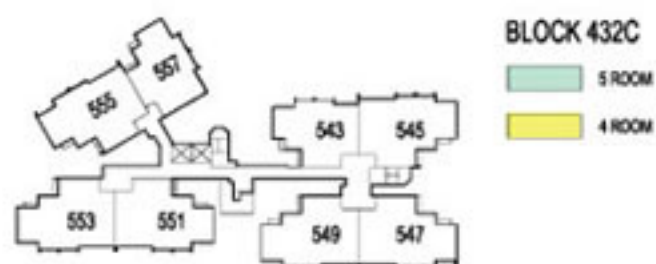
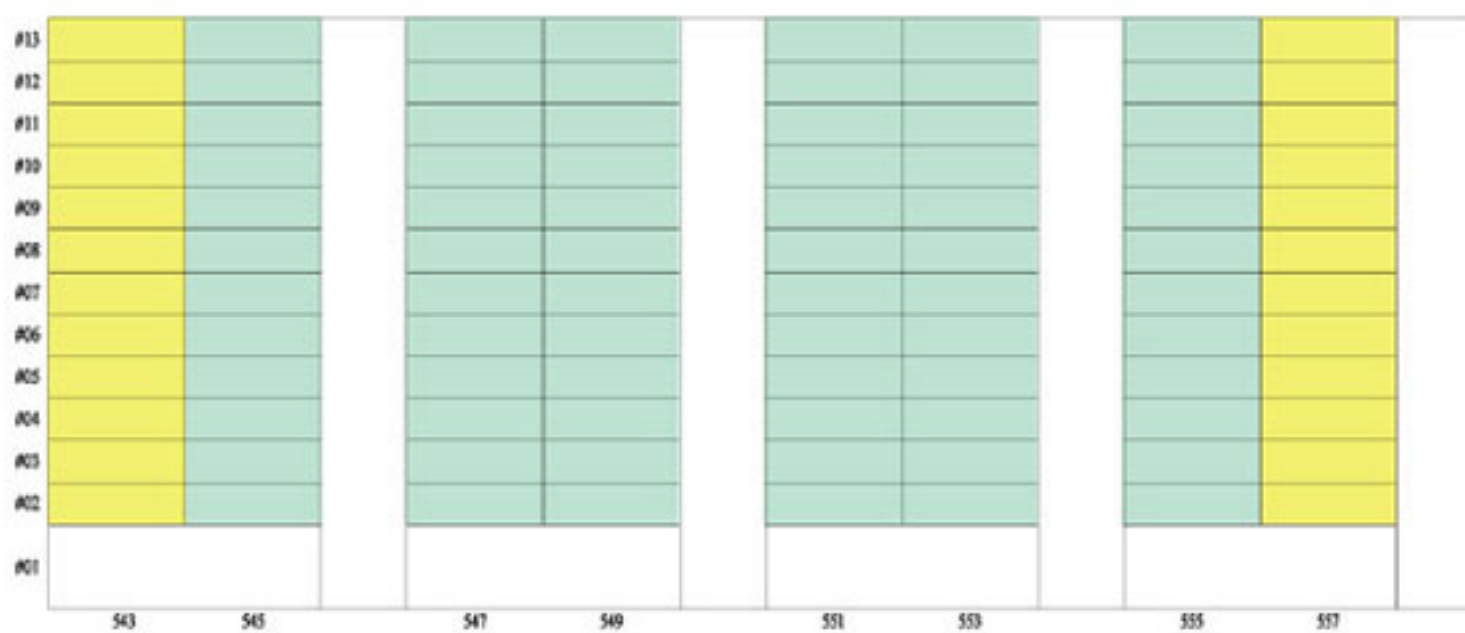
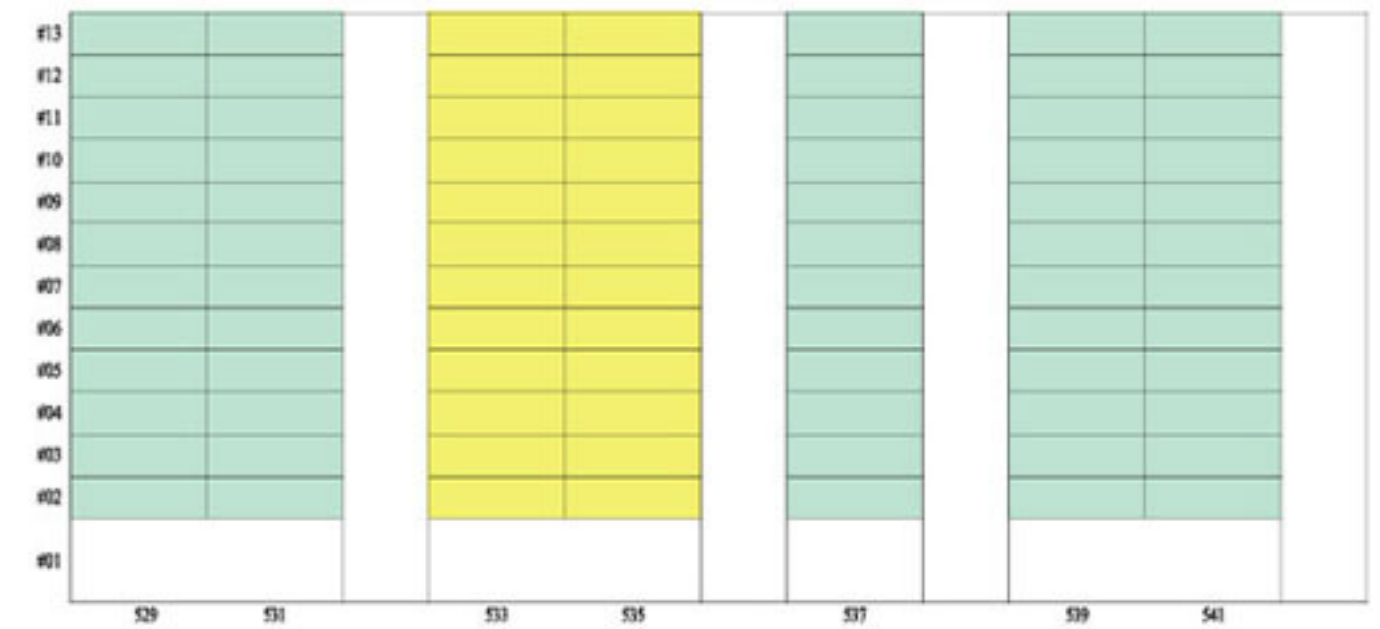
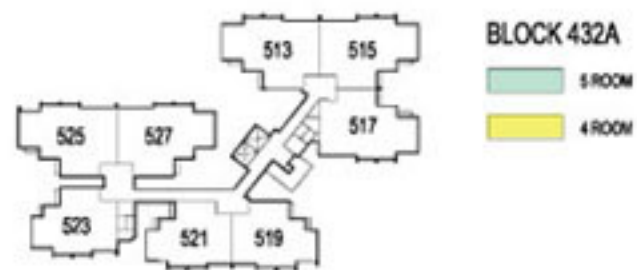
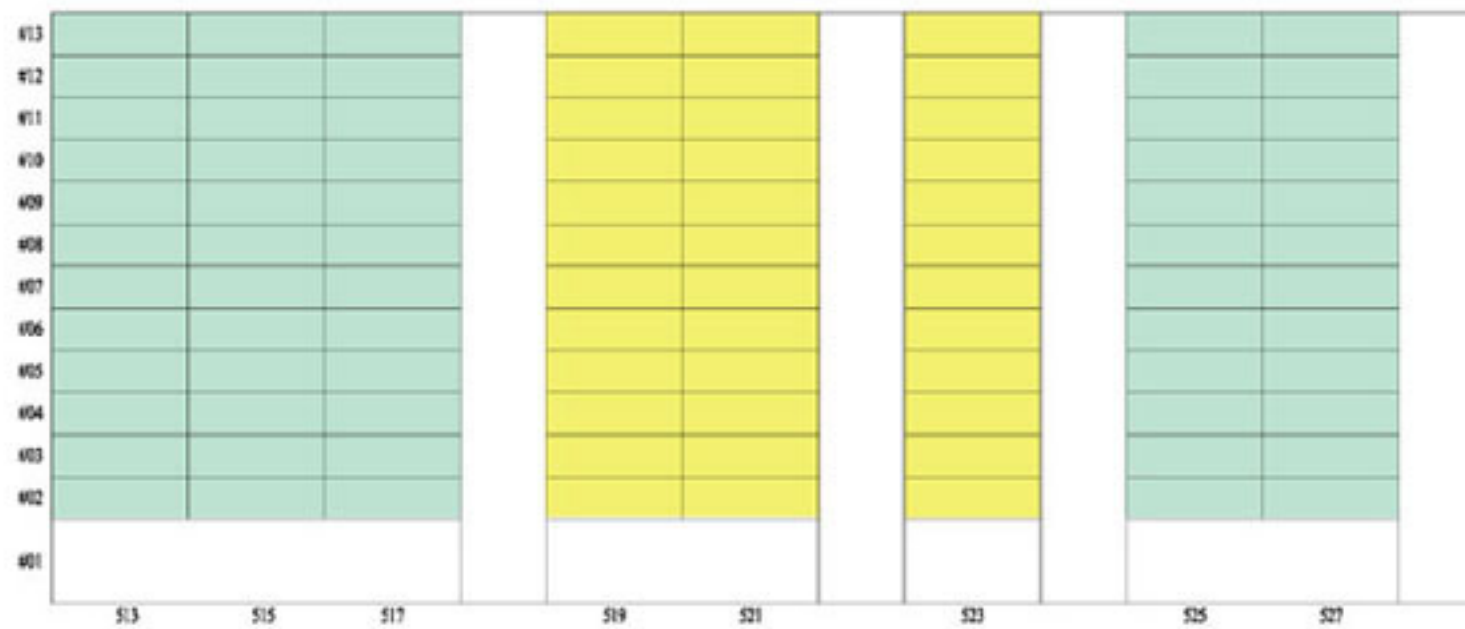


**BLOCK 431C**  
 4 ROOM  
 3 ROOM



**BLOCK 431D**  
 4 ROOM

## Unit Distributions







## GENERAL SPECIFICATIONS FOR VISTA SPRING @ YISHUN (For 4-Room & 5-Room)

### Foundation

Piled foundations.

### Structure

Reinforced concrete structural framework with reinforced concrete slabs.

### Roof

Reinforced concrete roof slab with precast concrete secondary roofing.

### Walls

All external and internal walls are constructed with reinforced concrete/solid blocks/bricks with cement plastering/precast panels/precast lightweight concrete partitions.

### Windows

Aluminium framed windows with tinted glass.

### Doors

Entrance	: decorative solid timber door and metal gate
Bedrooms	: laminated semi-solid timber door (Type D9a) (optional)
Bathrooms/WC	: laminated semi-solid timber door for 3-Room, 4-Room & 5-Room (Type D9a) (optional)
Household Shelter	: metal door
Service Yard	: aluminium framed door with glass

### Finishes

Ceilings	: skim coated or plastered and painted
Kitchen/Bathrooms/WC walls	: ceramic tiles
Other walls	: skim coated or plastered and painted
Living/Dining/Bedrooms floor	: glazed porcelain tiles with timber skirting (optional)
Kitchen/Bathrooms/WC floor	: ceramic tiles
Service Yard floor	: ceramic tiles with tile skirting
Household Shelter floor	: ceramic tiles

### Fittings

Quality locksets.

Quality sanitary fittings.

Vanity top wash basin at attached Bathroom/wc (for 5-room only), wash basin for other Bathroom/WC.

Clothes drying rack.

### Services

Gas service and concealed water supply pipes.

Concealed electrical wiring to lighting and power points (including water heater and air-conditioning points).

Television points.

Telephone points.

### Important Notes:

- 1) The Household Shelter is designed for use as civil defence shelter. The walls, ceiling, floor and door of the Household Shelter shall not be hacked, drilled, altered or removed.
- 2) Air-con panel in the main bedroom will be not provided.
- 3) Any unused or unoccupied open spaces in front of or nearby / adjacent to the flat units are not available for purchase and that the HDB will not entertain any requests from the flat owners to purchase and / or enclose the unused or unoccupied open spaces.

You are advised to visit HDB's website at [www.hdb.gov.sg](http://www.hdb.gov.sg) for information on renovations rules.

The plans and information in this brochure are the copyright of the Housing & Development Board (HDB), Singapore. The HDB reserves the right at any time without notice and at its sole discretion to change any aspect of this project including but not limited to the omission, amalgamation of or increasing or reducing the communal facilities and amenities. All art renderings, illustrations, pictures, photographs and other graphic representations and references are artist's impressions only. Similarly, all dimensions, areas, plans, colour schemes, descriptions and specifications noted herein are subject to change or alteration without notice if required by the Competent Authority or at HDB's sole and absolute discretion. The HDB will not entertain any request for alteration of the layout or specifications of a flat, to meet individual needs. The void deck in any apartment block may subsequently be used for facilities, such as child care centres, education centres, residents' committee centres and such other facilities as HDB shall deem fit.

*The Floor Areas are scaled Strata Areas.*