



The key to convenience

Artist's Impression



Located along Punggol Walk and near the proposed Town Centre, Punggol Waves offers 573 units of 3-room, 4-room and 5-room Standard flats. Altogether, the five 16-storey residential blocks, all located at the periphery of the site, will create a large space for the development's central garden where you can relax and unwind.

Artist's Impression



Inspired by the town's waterfront identity, Punggol Waves adopts a marine and nautical theme in its design. The name aptly captures the abstract wave forms designed on the building facade and the deliberate wave swirls planned in the landscape design. Come nightfall, a unique signature block with lighthouse features on its roof forms a prominent and attractive landmark in the vicinity when it lights up.



An abundance of amenities

Located along Punggol Walk, Punggol Waves is sited near the proposed Punggol Town Centre. When you need to commute, you can head over to the nearby Punggol MRT/LRT station and bus interchange. Drivers will be delighted to know that the Tampines Expressway (TPE) and Kallang-Payar Lebar Expressway (KPE) are just a short drive away.



For shopping, dining and leisure options, visit the vibrant Punggol Plaza located just minutes away. In addition, the upcoming Punggol Promenade and My Waterway@Punggol will offer plenty of recreational and lifestyle delights. Truly, Punggol promises to be the definitive waterfront town of the 21st century.

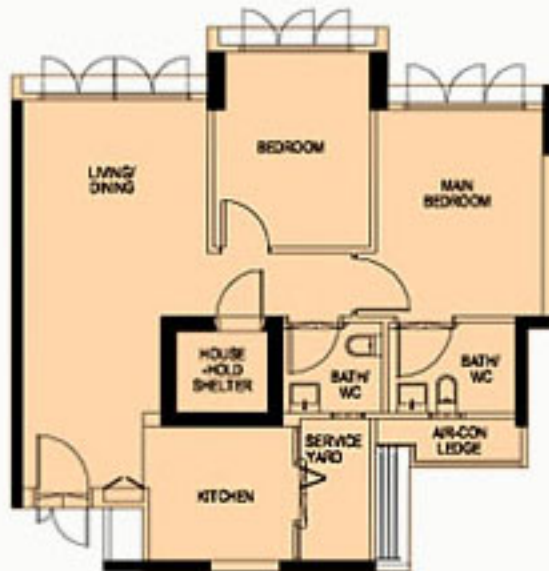
An alluring development



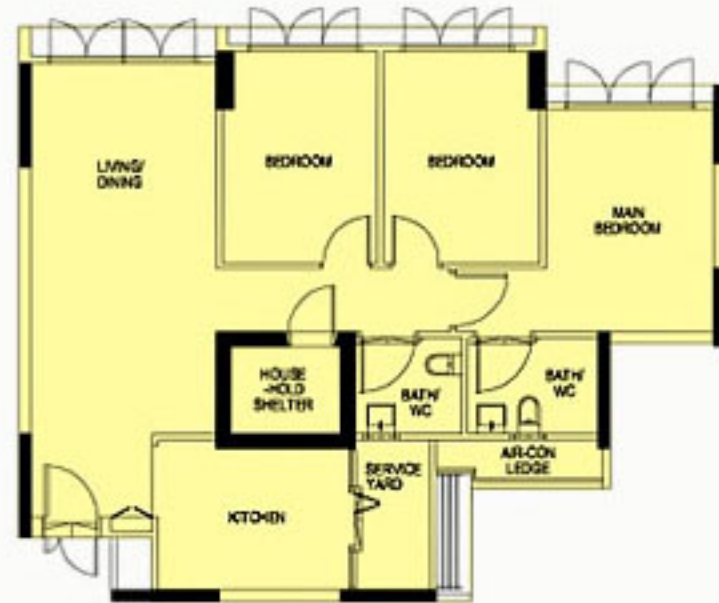
Punggol Waves features an exercise plaza and fitness stations for recreation, as well as a precinct pavilion and green spaces where you can chat and relax. For kids, the children's playground promises hours of outdoor fun. A Student Care Centre can also be found in the development. For shade and shelter, just use the thoughtful network of covered linkways connecting the multi-storey car park, residential blocks and drop-off porches. Throughout the development, you will also be constantly treated to the greenery incorporated into the landscaped spaces.



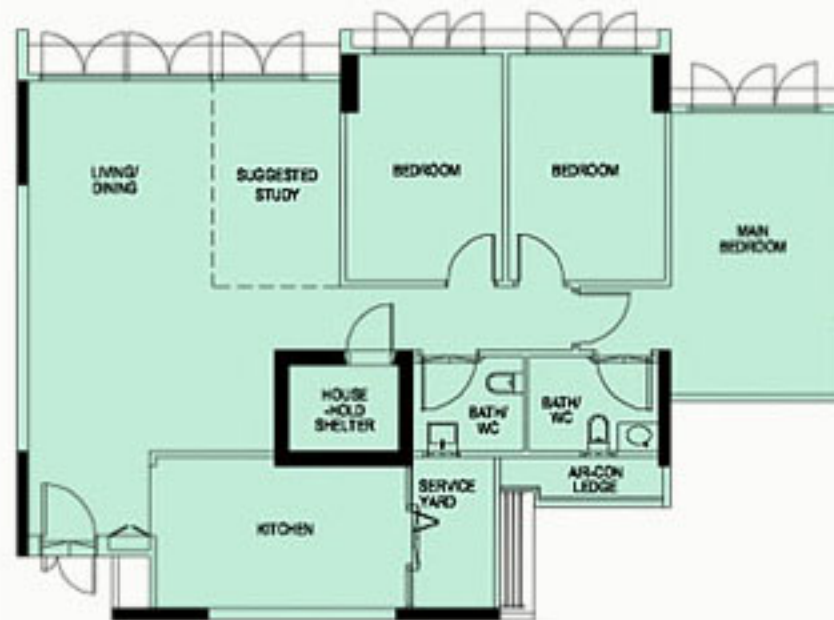
Typical floor plans



TYPICAL 3-ROOM FLOOR PLAN
APPROX. FLOOR AREA 67 sqm
(Inclusive of Internal Floor Area 65 sqm
and Air-Con Ledge)



TYPICAL 4-ROOM FLOOR PLAN
APPROX. FLOOR AREA 93 sqm
(Inclusive of Internal Floor Area 90 sqm
and Air-Con Ledge)



TYPICAL 5-ROOM FLOOR PLAN
APPROX. FLOOR AREA 113 sqm
(Inclusive of Internal Floor Area 110 sqm
and Air-Con Ledge)

The coloured floor plans are not intended to demarcate the boundary of the flat.



Samples of furnished layout plans



TYPICAL 3-ROOM FLOOR PLAN
 APPROX. FLOOR AREA 67 sqm
 (Inclusive of Internal Floor Area 65 sqm
 and Air-Con Ledge)



TYPICAL 4-ROOM FLOOR PLAN
 APPROX. FLOOR AREA 93 sqm
 (Inclusive of Internal Floor Area 90 sqm
 and Air-Con Ledge)



TYPICAL 5-ROOM FLOOR PLAN
 APPROX. FLOOR AREA 113 sqm
 (Inclusive of Internal Floor Area 110 sqm and Air-Con Ledge)



General specifications

Foundation

Piled foundations.

Structure

Reinforced concrete structural framework with reinforced concrete slabs.

Roof

Reinforced concrete roof slab with precast concrete secondary roofing.

Walls

All external and internal walls are constructed with reinforced concrete/solid blocks/bricks with cement plastering/precast panels/precast lightweight concrete partitions.

Windows

Aluminium framed windows with tinted glass.

Doors

Entrance	: decorative solid timber door and metal gate
Bedrooms	: laminated semi-solid timber door (Type D9a) (optional)
Bathrooms/WC	: laminated semi-solid timber door (Type D9a) (optional)
Household Shelter	: metal door
Service Yard	: aluminium framed door with glass

Finishes

Ceilings	: skim coated or plastered and painted
Kitchen/Bathrooms/WC walls	: glazed ceramic tiles
Other walls	: skim coated or plastered and painted
Living/Dining/Bedrooms Floor	: ceramic tiles with timber skirting (optional)
Kitchen/Bathrooms/WC Floor	: ceramic tiles
Service Yard floor	: ceramic tiles with tile skirting
Household Shelter floor	: ceramic tiles

Fittings

Quality locksets.
 Quality sanitary fittings.
 Vanity top wash basin at attached Bathroom/WC (for 5-room only), wash basin for other Bathroom/WC.
 Clothes drying rack.

Services

Gas services and concealed water supply pipes.
 Concealed electrical wiring to lighting and power points (including water heater and air-conditioning points).
 Television points.
 Telephone points.

Important Notes:

- 1) The Household Shelter is designed for use as civil defence shelter. The walls, ceiling, floor and door of the Household Shelter shall not be hacked, drilled, altered or removed.
 Air-con panel in the main bedroom will not be provided.
 You are advised to visit HDB's website at www.hdb.gov.sg for information on renovation rules.
- 2) The common areas and spaces fronting or surrounding the flats are not available for purchase, and HDB will not accede to any requests from purchasers to purchase and enclose the common areas.

The plans and information in this brochure are the copyright of the Housing & Development Board (HDB), Singapore. The HDB reserves the right at any time without notice and at its sole discretion to change any aspect of this project including but not limited to the omission, amalgamation of or increasing or reducing the communal facilities and amenities. All art renderings, illustrations, pictures, photographs and other graphic representations and references are artist's impressions only. Similarly, all dimensions, areas, plans, colour schemes, descriptions and specifications noted herein are subject to change or alteration without notice if required by the Competent Authority or at HDB's sole and absolute discretion. The HDB will not entertain any request for alteration of the layout or specifications of a flat, to meet individual needs. The void deck in any apartment block may subsequently be used for facilities, such as child care centres, education centres, residents' committee centres and such other facilities as HDB shall deem fit.

The Floor Areas are scaled Strata Areas.